



International Hydro b.v.

Address: Strawinskylaan 3051

NL - 1077 ZX Amsterdam

The Netherlands

Phone: +31 (0) 20 615 70 00

Fax: +31 (0) 20 30 12 202

Internet: www.international-hydro.com

E-mail: info@international-hydro.com

Chamber of Commerce/KvK: 34297589

-- PRESS RELEASE --

Consortium formed for development of hydro power plant at Borgharen

Amsterdam, 23 February 2010 – Arbra, International Hydro, Greenchoice and World Improvement Money announced today that they concluded a cooperation agreement for the development of a hydro power plant at Borgharen (along the Maas near Maastricht).

The planned hydro power plant at Borgharen, with a capacity of 11 MW, will be the largest hydro power plant that has been built in the Netherlands in the past 25 years, and one of the three largest hydro power plants of the Netherlands. The investment sum is estimated to be about 42 million Euro.

The power station has an estimated annual production of 46 million kWh, which corresponds with the energy consumption of about 13,000 households.

Hydropower is one of the most climate-neutral and sustainable methods to generate electricity. For example, the power station at Borgharen will reduce emissions of CO₂ by 38,000 tons per year compared to the usual forms of electricity generation in the Netherlands. This annual reduction of the CO₂ emission corresponds with the annual emission of no less than 20,000 to 22,000 cars.

In addition, the hydro power plant at Borgharen will save 85 tons of SO₂, 75 tons of NO_x and 11 tons of fine dust every year compared to a coal-fired power station. Borgharen therefore directly contributes to the Dutch climate goals.

The hydro power plant also makes a positive contribution to the Dutch economy, because the import of conventional fuels (oils, coals and gas) is permanently reduced.

At present conclusive talks are held with the Department of Waterways and Public Works about the various licence phases, as well as with the Province of Limburg and the city of Maastricht.

Ir. Anton van der Boom, managing director of Arbra states: 'My long-term dream to use the energy potential of the Maas at Borgharen by developing a hydro power plant is increasingly becoming a reality. Because of the additional experience and organisational and financial power of my new partners we have formulated all preconditions to actually realise the power station.'

Gideon Overwater, co-founder and managing partner of International Hydro, says: “Until now we, as International Hydro, were only active in Germany and France in building, renovating and operating hydro power plants. In the Netherlands there are only a few possibilities to develop this very sustainable source of energy. This chance to also use our experience as a Dutch company in the Netherlands makes this project very special for us’.

Michiel Rexwinkel, managing director of Greenchoice: “The involvement of Greenchoice in the development of this power station emphasises our strategy, whereby we do not only focus on the delivery of green energy to our 250,000 Dutch clients, but we also increasingly focus on the production of green energy. We do this by participating in the development of small-scale sustainable and green generation of energy in the Netherlands and other West-European countries. We are therefore proud that we are involved in this unique project in the Netherlands.’

Peter Arensman, managing director and founder of World Improvement Money stated: “I have a very great respect for the long-term commitment of Anton van der Boom to realise his dream of a hydro power plant at Borgharen. This proof of perseverance and entrepreneurship must serve as an inspiration for everybody in this economically challenging period. We at World Improvement Money therefore emphatically want to support initiatives of entrepreneurs such as Anton, who make a permanent positive contribution to people, the environment and the climate’.

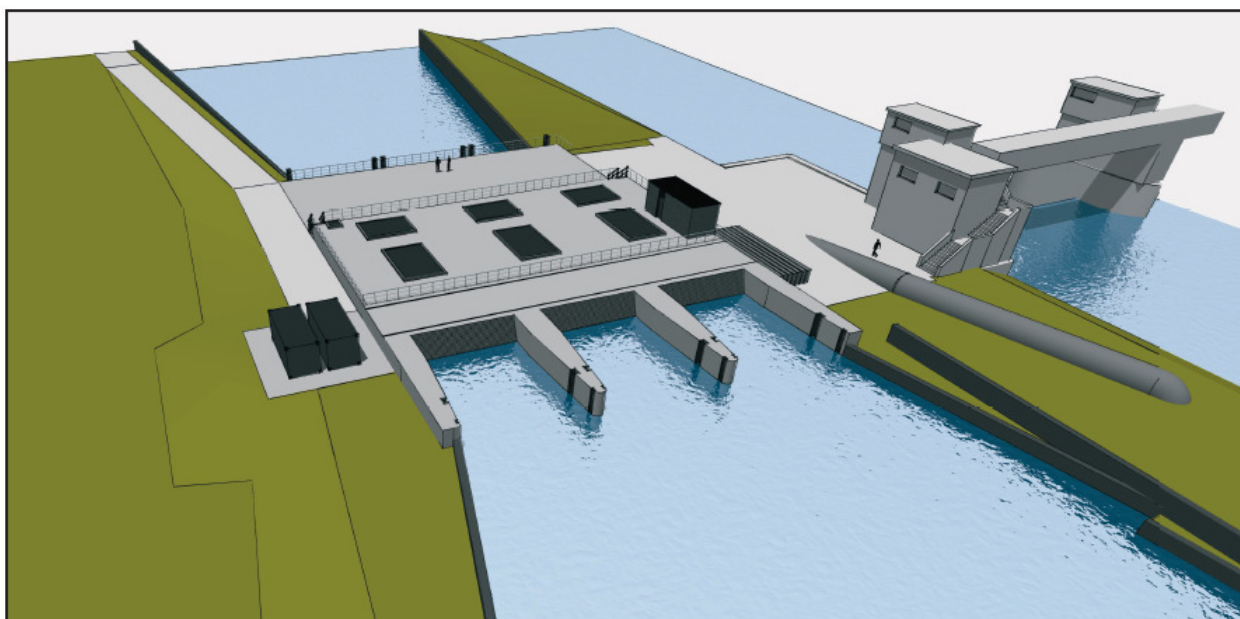
Technical details hydro power plant at Borgharen

<i>Peak capacity</i>	11 MW
<i>Average annual production</i>	46 GWh
<i>Rated head</i>	4.5 m
<i>Turbines</i>	horizontal Kaplan turbines
<i>Maximum output</i>	300 m ³ /s
<i>River</i>	Maas
<i>Location</i>	in the Bosscherveld, next to the dam of Borgharen

Importance of hydropower

At present (2010) 19.4% of the European electricity production is produced by actual sustainable sources of energy, such as hydropower, wind power, biomass and solar energy. 63% comes from hydro power plants. This emphasises the importance of hydropower in the European strategy to stimulate the use of alternative sources of energy in the coming years (source: European Commission, DG TREN, 2009).

In the Netherlands hydropower has played a limited role until now. At present only 0.2% of the electric energy is obtained from water. A study by WINN (the innovation programme for Water Challenges from the Department of Waterways and Public Works) shows that energy from water could meet 10% of the electricity demand in the Netherlands.



06.146 Artist Impression 01

About Arbra and ir. Anton van der Boom

Arbra, the personal company of Ir. Van der Boom, has its registered office in Bemelen (Limburg). Arbra has already been working on the realisation of a hydro power plant at Borgharen for several years.

As a hydraulic engineer Mr Anton van der Boom has built up a broad international experience. For example, he has worked on irrigation, drainage and river projects in Sudan, Iraq, Burma and Thailand and has supervised the implementation of main sewer systems, pumping-stations and waste water purification plants in the Netherlands.

About International Hydro

International Hydro is a company that has its registered office in Amsterdam. Its motto is: *'nothing greener than blue'*. We build, develop and operate our own small and medium-sized hydro power plants (up to 20 MW) in Europe. International Hydro is a young and rapidly growing company with the aim to become a prominent player on this clean and sustainable segment of the European hydropower market. In the meanwhile International Hydro has offices in Amsterdam, Adenau (Germany) and Nancy (France).

About Greenchoice

Greenchoice is a Dutch energy company that only supplies green energy to its clients. Its mission is to bring its client base to a net 0-consumption of energy. Greenchoice does this by stimulating a change in behaviour and by investing in possibilities for clients to generate energy themselves in the future. If possible, Greenchoice also offers financial support to decentralised, sustainable energy projects and initiatives.

Greenchoice has its registered office in Rotterdam.

About World Improvement Money (WIM)

World Improvement Money is a Dutch investment company from The Hague.

WIM participates in companies that increase the standard of living of people in developing countries, strengthen the social responsibility of people and companies

and/or help our society to deal with natural resources in a more sustainable way. Apart from financial support, we also invest by making expertise and entrepreneurship available.

'Profit' plays an important role in investments by WIM in the field of 'People and Planet', because profit is a crucial element to also let companies and projects flourish in the long term.

For more information

For more information please contact one of the following managing partners of International Hydro:

- Alex Schoep (a.schoep@international-hydro.com) or
- Gideon Overwater (g.overwater@international-hydro.com)

By email or by phone: number 020 615 7000.

Website : www.international-hydro.com